

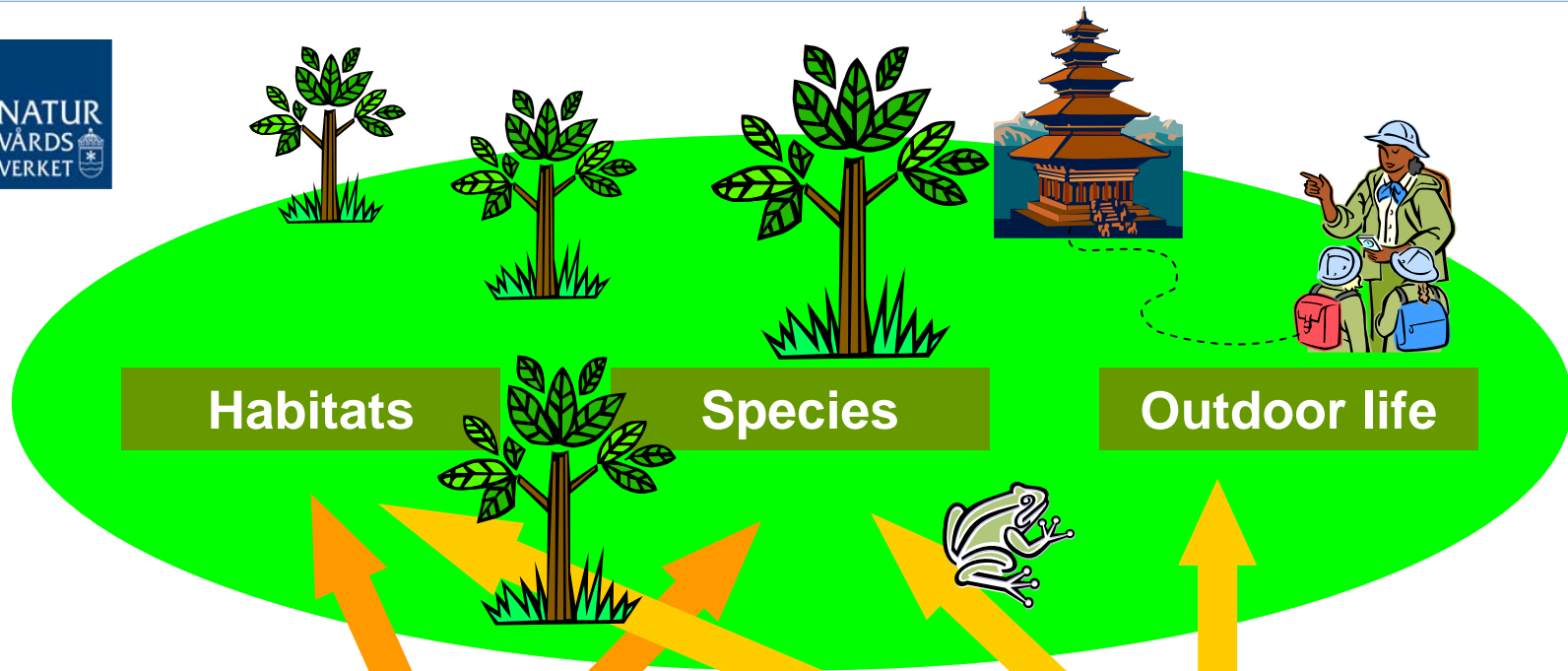
**€ 10 000 000**

# Towards a common standard for Monitoring of visitors and visitor facilities in Sweden's protected areas

Johan Rova

Swedish Environmental Protection Agency  
& Jönköping County Administrative Board





**Mandatory**  
Regional/national level  
Habitat and Species  
directive

**Voluntary**  
Regional level



## Aim

- Facilitate monitoring
- A standardized list of objectives
- Suggested monitoring methods
- Nordic-Baltic standards for visitor monitoring

## Standardized objectives

- Acceptable number of visits
- Satisfied visitors
- Well kept visitor facilities
- Accessible visitor facilities

## Standardized methods

- Visitor counting
- Visitor survey
- Manager's judgement
- Compilation of existing data
- Every 6:th year (approx)

## [Suggested standardized objective]

[Suggested standardized indicator with site specific level of acceptance #1]

[Suggested standardized indicator with site specific level of acceptance #2]

- Suggested monitoring method #1
- Suggested monitoring method #2

**The number of visitors should be in accordance with the objectives of the site.**





## **The number of visitors should be in accordance with the objectives of the site.**

”The [protected area] has [minimum X] [and] [maximum Y] visits during [time span] [after a certain action]”

- Automatic counting of visits

**Our visitors are satisfied.**



## Our visitors are satisfied.

”At least [75] % of the visitors are satisfied or very satisfied with their visit.”

”At least [75] % of the visitors are satisfied or very satisfied with the following experiences/services: XX, YY, ...”

”At least [75] % of the visitors are satisfied or very satisfied with the information boards at the site.”

- Visitor survey
- Experiences and services extracted from site specific objectives and management plan

## Resolution

"Site is established in order to protect the old growth forest... to provide a spectacular view over the countryside... allow visitors to experience wilderness..."

## Management plan

"...parking for cars and busses, information about forest eco system..."

## Resolution

"Site is established in order to protect the old growth forest... to provide a **spectacular view** over the countryside... allow visitors to **experience wilderness**..."

## Management plan

"...**parking** for cars and busses **information** about forest eco system..."

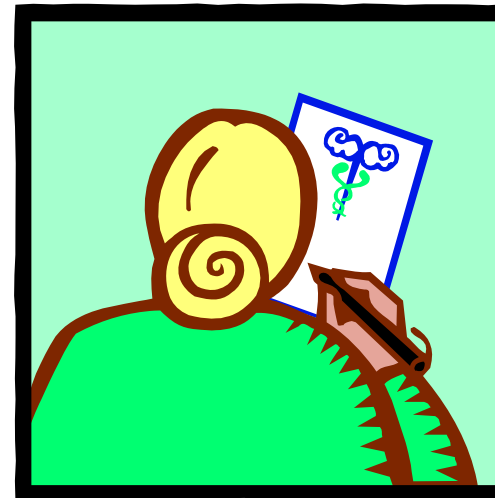
**Visitor Survey!**

*Dear visitor,  
what is your experience of...*

...possibilities to have a spectacular view	1-2-3-4-0
...feeling of wilderness	1-2-3-4-0
...the parking place	1-2-3-4-0
...information at the site	1-2-3-4-0
Over all judgement of visit	1-2-3-4-0

## Visitor survey

- Sex, Age
- Weather
- Travel distance, Travel mode
- Previous visit
- How did you learn about the site?
- Is the site worth preserving?
- Why did you go here?
- Which parts have you seen?
- Free comments



**Experiences and services  
should be provided as stated in  
resolution and management plan.**





## **Experiences and services should be provided as stated in resolution and management plan.**

”It is possible for visitors to enjoy at least [75] % the following experiences and services: XX, YY...”

- Critical inventory
- Experiences and services extracted from site specific objectives and management plan

*Now, honestly, what are the possibilities for a visitor to...*

Acceptable/ Unacceptable

...experience a spectacular view	1-2
...get a feeling of wilderness	1-2
...enjoy the parking place	1-2
...find use of the information provided	1-2

**Boundaries should be well marked.**



## Boundaries should be well marked.

”Less than [XX] kilometres of the boundary is unacceptably marked.”

- Compilation of boundary quality data collected during ”everyday management”
- Boundary quality data continuously stored in management data base

**Visitor facilities are in good shape.**



## Visitor facilities are in good shape.

”All visitor facilities [*or e.g.* all road signs, only parking places, some information boards, ...] are at least in an acceptable state.”

”All facilities necessary for the service [XX Trail, etc.] are at least in an acceptable state.”

- Compilation of facility state\* data for specified facilities

\*good-acceptable-unacceptable-ramshackle-unexisting-unknown

VIC Natur - SkötselDOS - Hantera Anordning

Arkiv Visa Arbetsflöde Objekt Sök Hjälp

Utforsaren

- Anordning Naturum
- Anordning Kävsjön runt
- Anordning Transtigen
- Anordning Kävsjön runt G:a sträckningen
- Anordning Naturumparkeringen rastplats
- Anordning Naturum dass\_1
- Anordning Fågel/utsiktstorn vid naturum
- Anordning Naturumparkeringen informationstavla
- Anordning Kävsjötornet (Lilla tornet)**

Karta

Teckenför

- SkötselD
- Sköt
- Sköt
- Anor
- Åtgä
- Sköt
- Verksam
- Detaljer
- Översikt

Arbetsflöde

Anordning

Namn: Kävsjötornet (Lilla tornet)

Id: 30239374

Typ: Fågel/utsiktstorn

Typ av led: <Ingen vald>

Tillkomst

Status: Bra

Statusdatum: 2009-11-02

Bidos Skötselobjekt Skötsel Ka

Naturvårdsanteckning

Befintligt bevarandemål

Parameter:

Enhet:

Mått:

Art/Naturtyp:

Befintligt bevarande:

Anordning

Namn: Kävsjön runt

Id: 30239296

Typ: Led

Typ av led: Vandringsled

Tillkomst

Status: Acceptabel

Statusdatum: 2009-11-02

Anordning

Namn: Wibecksleden

Id: 30239314

Typ: Led

Typ av led: Vandringsled

Tillkomst

Status: Fullständig

Statusdatum: 2009-11-02

Anordning

Namn: Fågel/utsiktstorn vid naturum

Id: 30232600

Typ: Fågel/utsiktstorn

Typ av led: <Ingen vald>

Tillkomst

Status: Bra

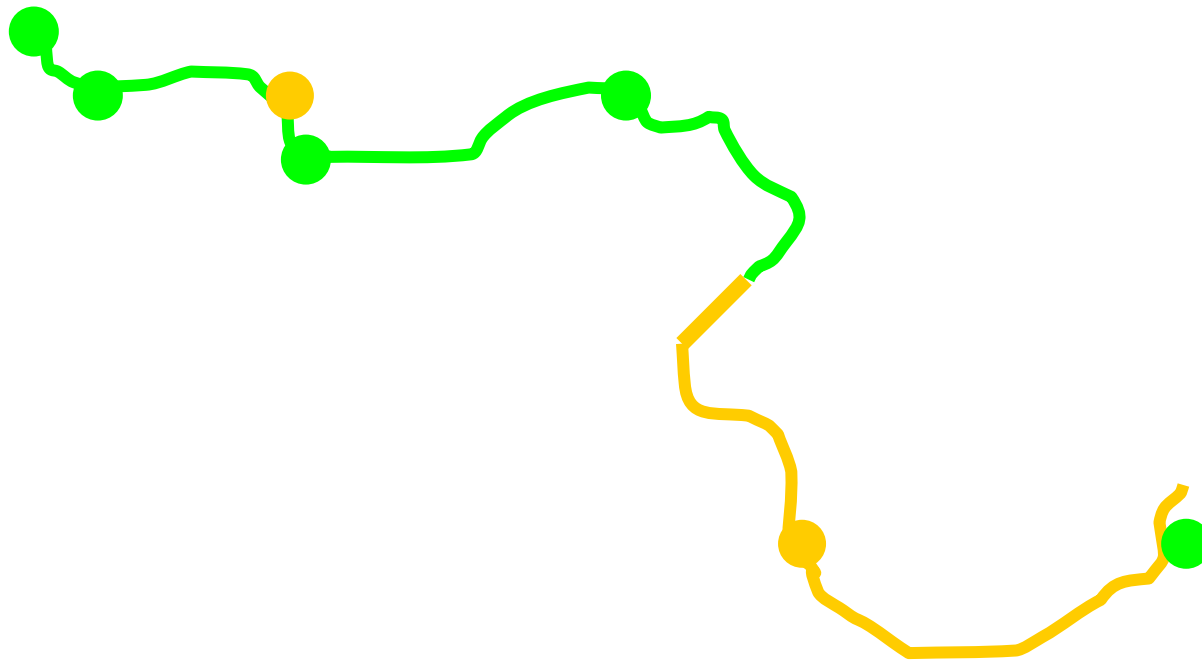
Statusdatum: 2009-11-02

30238985	
30238482	
30238996	
30238485	
30238479	Naturum d
30238481	Naturum in
30238992	Kävsjön runt
30232459	Parkering Naturum

I'm the  
Monitoring  
Machine...

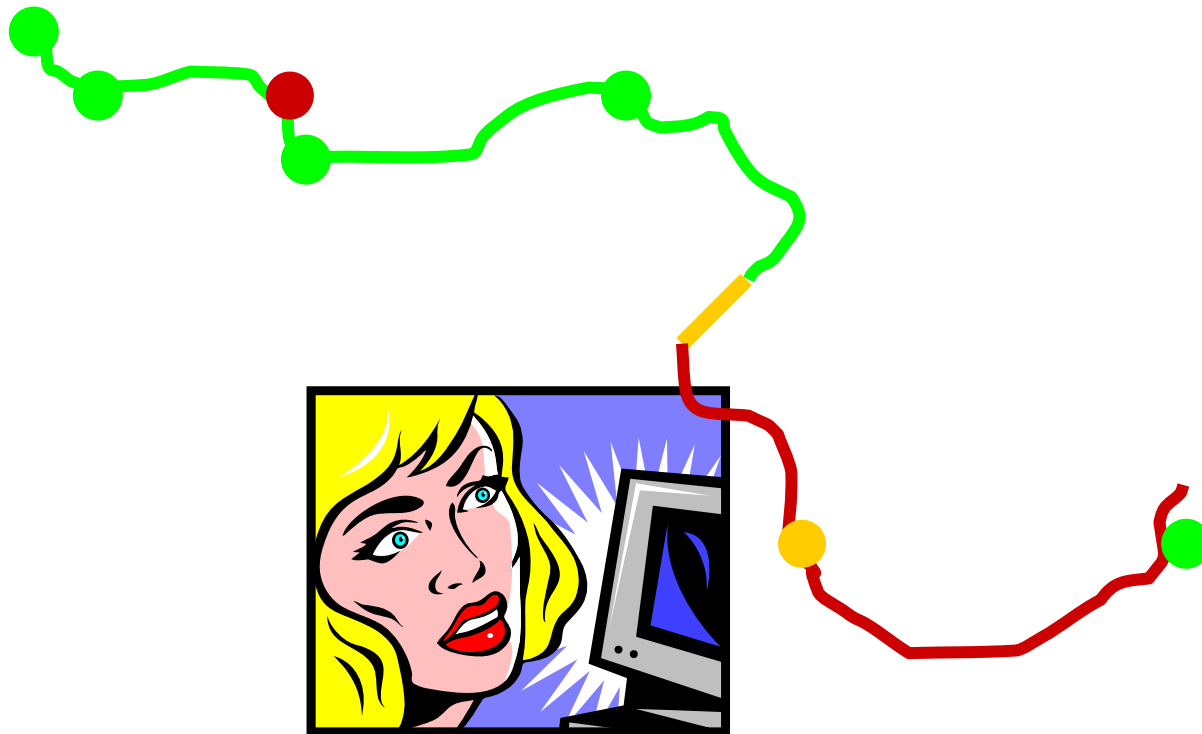


## The X Trail: Good Visitor Service fulfilled (declining)





## The X Trail: Good Visitor Service NOT fulfilled



**Promises of accessibility shall be kept.**



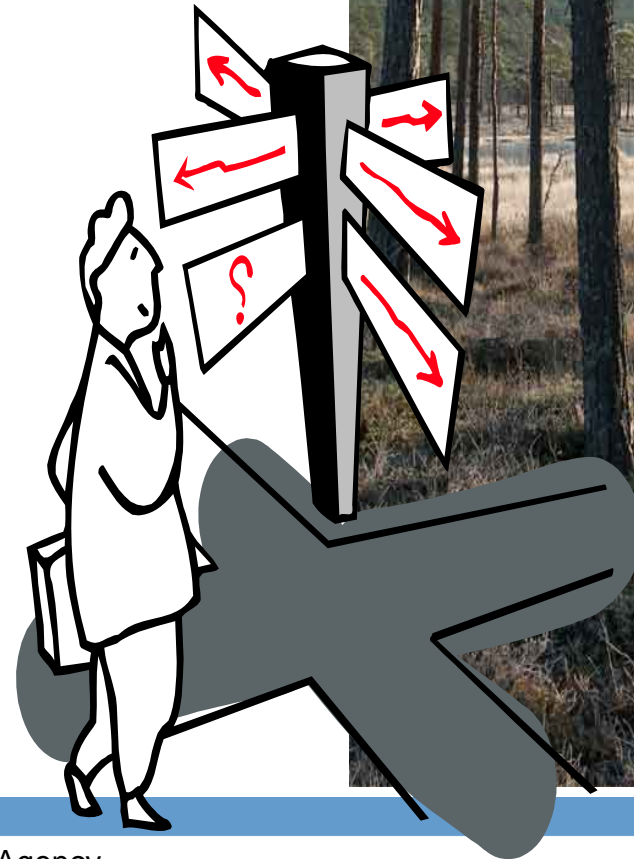
## Promises of accessibility shall be kept.

”All facilities necessary for the service [XX Trail, etc.] are at least in an acceptable state.”

”All facilities necessary for the service [XX Trail, etc.] are judged as at least acceptable to access.”

- Compilation of facility state data for specified facilities

## Entrance areas are functional.



## Entrance areas are functional.

”At least [75] % of the visitors are satisfied or very satisfied with the design of the entrance site [X].”

”All facilities at entrance site [X] are at least in acceptable state.”

”All facilities at entrance site [X] are judged as at least acceptable to access.”

- Visitor survey
- Compilation of facility state data



Thank you!

