

The Digital Outdoor Guide as a tool for protected area management



Nordic Baltic Europarc Seminar
Using Databases in Protected Area anagement
17. March 2017

By Jan Woollhead
Parks'nTrails

My presentation

- My background
- Why is it important
- Some general ideas and principles
- An example from a protected area in Denmark
- How the Digital Outdoor Guide works

My background

- I was a civil servant for 20 years developing a lot of good ideas
- Established in 2015 a limited company to follow up on some promising ideas results developed for outdoor recreation and nature management
- The name of the company is Parks'nTrails, and it's member of Europarc since 2016. It has four founders with different skills.
- Although it's formally a limited company we are very idealistic, and we do support sustainable development goals
- Personally, I am also serving as a member of the World Commission on Protected Areas within IUCN

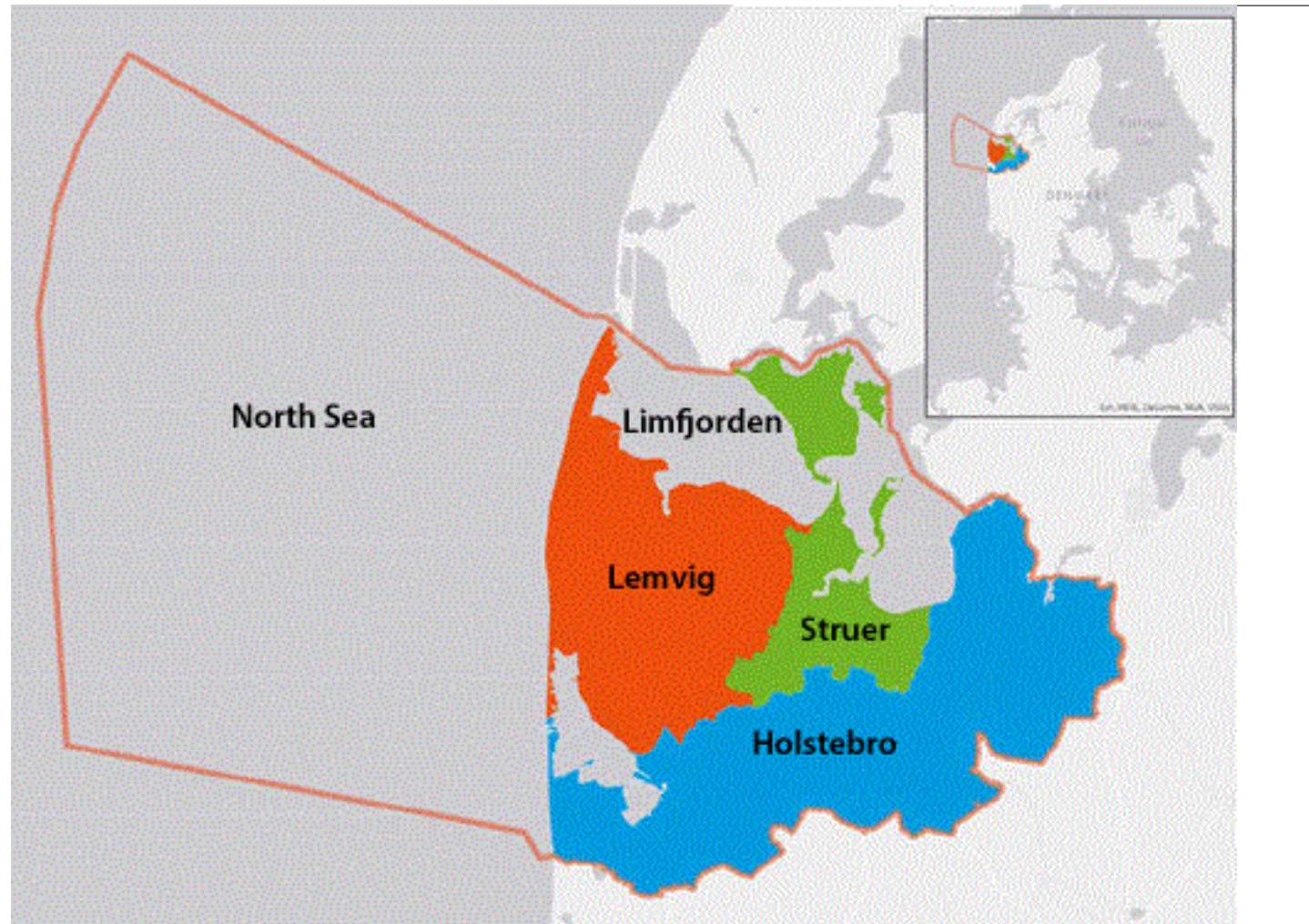
Why are digital solutions important for PA management?

- Basically they help improve nature conservation, and management goals
- They can make management much more efficient and save time and money for other important issues
- They can support a platform for cooperation internally and externally, including voluntary work
- They can organise and save data in a defined manner improving a common language
- They can improve information to visitors, and by that direct people to certain areas, so nature is not harmed
- They can increase income of the PA, and the local business connected to PA, - including partners

Our case – Geopark Western Jutland

- The geopark is applying for UNESCO geopark status – to hopefully be accepted in 2017.
- It comprises of three municipalities, Holstebro, Lemvig and Struer
- Including sea area, it covers an area of about 4,759 square km
- Staff is only three persons, but cooperate with civil servants, volunteers, museums, local business to make it possible
- And they use the Digital Outdoor Guide to speed up their good work.

Map of the geopark



Is a geopark only geology?

No! While a geopark must demonstrate geological heritage of international significance, the purpose of a geopark is to explore, develop and celebrate the links between that geological heritage and all other aspects of the area's natural, cultural and intangible heritages.

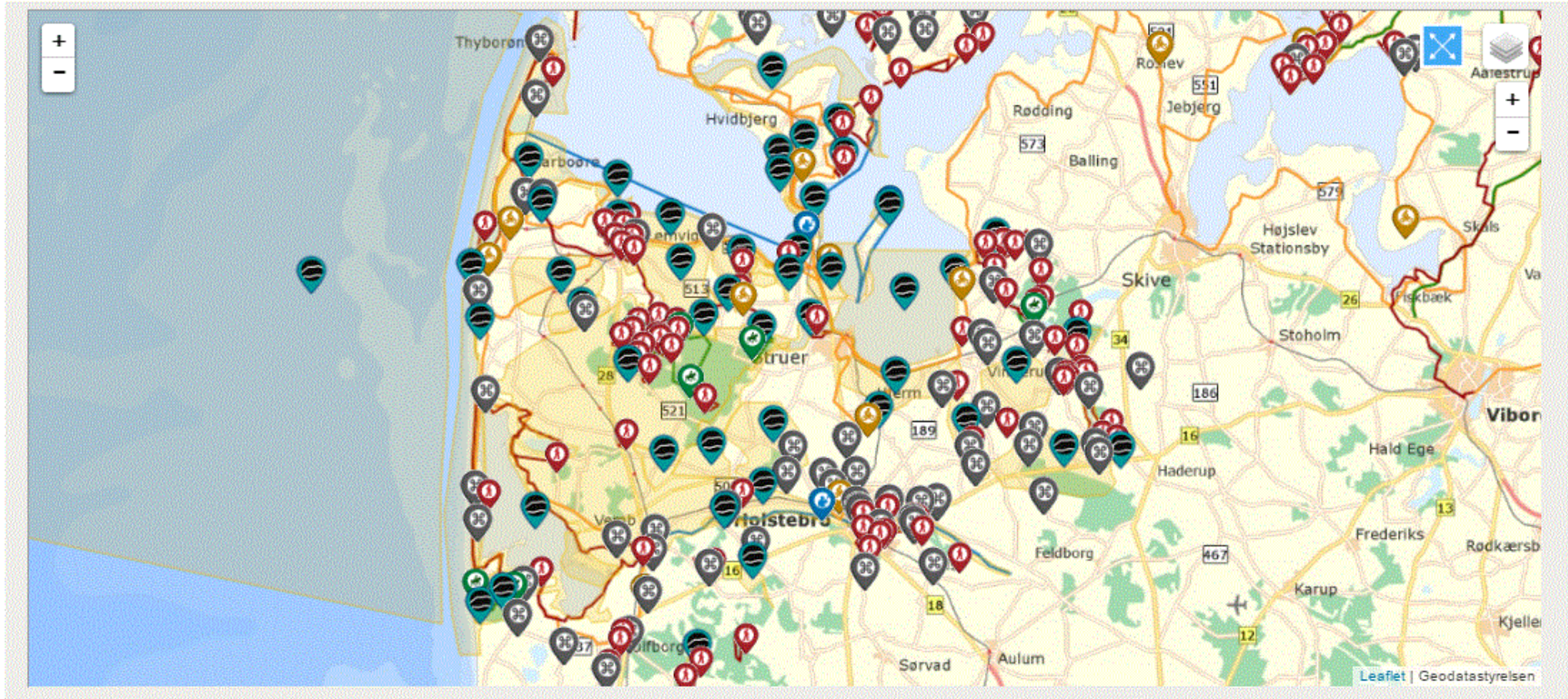
It is about reconnecting human society at all levels to the planet we all call home and to celebrate how our planet and its 4,600 million year long history has shaped every aspect of our lives and our societies.

Citation from the UNESCO homepage on geoparks

How did the geopark use the Digital Outdoor Guide?

- They started up on 1st of August with a workshop on how to add data
- On the 30th November they delivered an application with a complete map and documentation of 48 geosites
- They have added all the major routes for hiking, cycling, horseriding, kayak and canoe with places of interest to see, besides geosites also natural sites
- They have added museums, local attractions, places to stay overnight, places to eat on the printed map to UNESCO

Geopark has a full interactive map



<http://geoparkvestjylland.visitdenmark.com/danmark/oplevelser-3>

Digital Outdoor Guide is the common ground



LOG IND
Dansk
English
Deutsch



CURRENTLY .. Show all
GEPARK VESTJYLLAND, HOLSTEBRO, STRUER OG LEMVIG KOMMUNER PÅ FRILUFTSGUIDEN
Holstebro, Struer og Lemvig Kommuner, der i samarbejde med Danmarks Naturfredningsforening står bag oprettelsen af Geopark Vestjylland er i færd med at lægge deres eksisterende rekreative stier og rut ...
Like to know more
Thomas Holst Christensen / Lemvig Kommune

PLANNING THE TRIP
My trip
Check before the trip
Proceeding along the trail
USER TO USER
Get tips
Share tips

CONTACT
Useful links
Friluftsguiden.dk
Facts

PRINTED MAPS
Order Maps



The Digital Outdoor Guide in Danish called Friluftsguiden is use by half of the Danish municipalities

<http://www.friluftsguiden.dk/?lng=en>

More than a homepage

It acts as a digital platform meaning the same data can be used for many purposes when they are put into the database

Data can be used for

- Apps
- Homepages
- iFrame maps
- Print outs
- Design of own tour guide
- Tour maps
- Guideboks
- Info boards
- GIS - planning

It's also a platform for cooperation

Data can be added by many sources, but there is local administrator who are in control of who can add data

You can have local museums, societies, skilled people adding data, or people from different municipalities working together

The image shows a 'New User Profile' form with the following fields and options:

- Name:** Text input field.
- Department:** Text input field.
- Local authority:** Dropdown menu with 'Select authority' and a downward arrow.
- Email address:** Text input field.
- User name:** Text input field.
- Password:** Text input field containing 'ZtxPDfs'.
- User rights:** Radio button options:
 - Adopter (Can only submit regular reports and record route errors)
 - Editor without publishing privilege (1 - can only edit own text and images; 2 - can not set pages visible on the websites)
 - Editor (can only edit own text and pictures)
 - Municipality editor (can edit everything posted on the municipality)
 - Municipality administration (Can add new users and edit everything posted on the municipality)
 - System administrator
- Receiving error messages per e-mail
- Save:** Button at the bottom left.

Kind of data that can be added

- Points
- Routes
- Areas

All data elements are split into a short text and long text.

Different languages can be added to each element. For example national language, English and German.

The system can act as an archive for photos and folders. Photos are saved in high resolution.

Points

One point can have different attributes making it more easy to add data. So one point can be both a natural and cultural site with specific types.

In GIS you can have only one attribute at a time.

- Nature
- Cultural
- Facilities
- Information
- Places to stay and eat
- Outdoor education places
- Transport

Routes

All types of routes are split into four types

- Etapen – longer routes
- Circle routes
- Other routes
- Access

Types of routes can be

- Hiking
- Cycling
- Canoe/kayak
- Horseback-riding
- Other types of routes

The system supports if it's

- International
- National
- Regional
- Local

Longer routes are split into stages (etapen) the different stages can be maintained by different editors and administrators

Areas

- Nature parks
- National Parks
- Geoparks
- Recreation areas
- Protected areas with restriction in access

This can further be developed so those using data on apps will get a warning when they cross a border of a protected area.

Information only for management

For each element can on the backend be added information only for managers




Education for schools

Finding places good for education in nature

Including material.

<http://www.friluftsguiden.dk/?show=laering>

Active learning Close



Active learning – are places, where you can move the class room or learning activities outdoor.
Find places dealing with the following topics:

- Forest
- Water
- Meadow
- Heath
- Historic
- Prehistoric
- All places

Gem Luk

TANDRUP SØ



Tandrup Sø er et dødishul, der ligger ved Uhrehøje plantage og det fredede område "Sjørup-Tandrup Sø". Søen ligger ved naturbasen. Find inspiration til aktiviteter og undervisning på nedenstående link.

[Undervisning i naturen](#)

[Naturekspeditionen](#)

[Skoven i Skolen](#)

[Folder Uhrehøje plantage](#)

*Redaktør: Lene Larsen /
opdateret den 30-09-14*

| DEL

Some closing remarks

- The system is not to make big money put to serve nature conservation
- Software is our own, so it can easily be adopted to needs in local places
- Data are very secure – hostmaster is handling data from companies like Carlsberg and Vestas
- You own your own data, and can also extract it. It can also be extracted for use in GIS – and GIS data can be added.
- We are looking for others who can have interest in using the system. It's available in an English version

Thanks for your attention

Jan Woolhead

Parks'nTrails

Lundsgårdsvej 7

4180 Sorø

Tlf. 25 70 31 21

jw@parksntrails.com

www.parksntrails.dk

<https://www.parksntrails.com/>

Member of World Commission on Protected Areas, IUCN

Member of Europarc

